



DEVIATORE

DEVIATORE ENTRATA MARTELLINA



Deviatore entrata per martellina | Handle positioning diverter |
Renvoi de fouillot pour béquille à poignée | Desviador entrada maneta



Cassa e copricassa in zama; Ruote in acciaio tornito C40; Perni in acciaio zincato. Interasse deviazione 12,5 mm.



Case and cover in zamak; C40 turned steel wheels; Pins in galvanized steel. Backset deviation 12.5 mm.



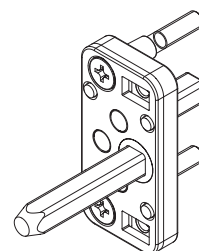
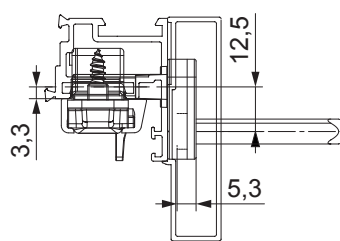
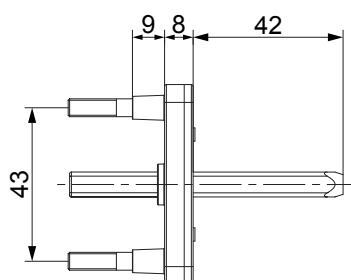
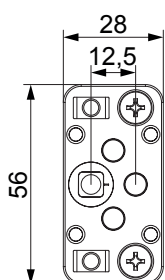
Boîtier et couvercle de boîtier en zamak; Jantes en acier tournées C40; Goupilles en acier galvanisé. Déviation d'entrée de 12,5 mm.



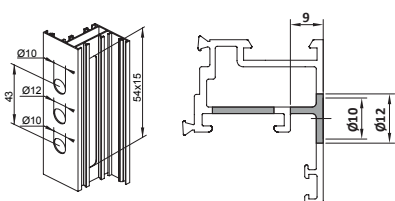
Caja y tapa de carcasa en zamak; Ruedas de acero torneadas C40; Pasadores en acero galvanizado. Desviación de entrada 12,5 mm.



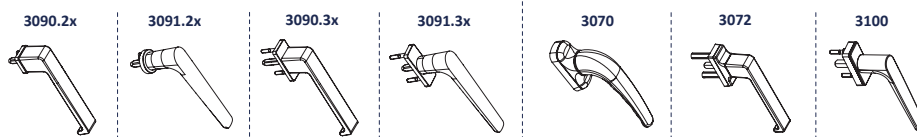
ART.	3632			
Imballo Package Conditionnement Embalaje	5 Pz			
Finiture disponibili Available finishes Finitions disponibles Acabados disponibles	1	2	3	4



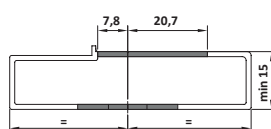
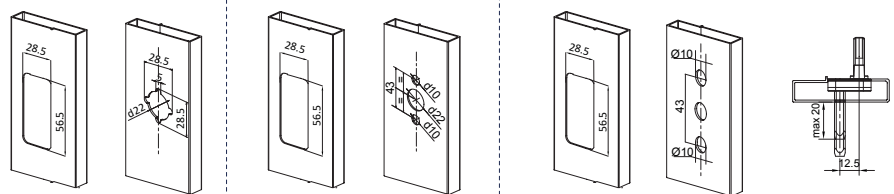
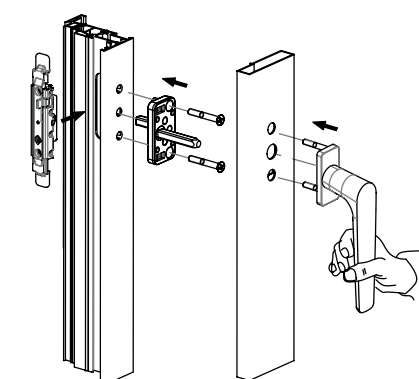
LAVORAZIONE ANTA / SASH MACHINING



LAVORAZIONE CARTELLA DI CENTRAGGIO / CENTERING COVER MACHINING



MONTAGGIO / ASSEMBLY



!
Rimuovere il perno della maniglia
Remove the pin from the handle
Tagliare le viti delle maniglie
Cut the screws supplied with handle

