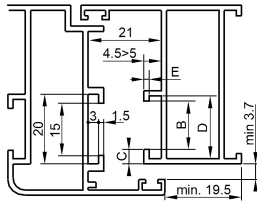
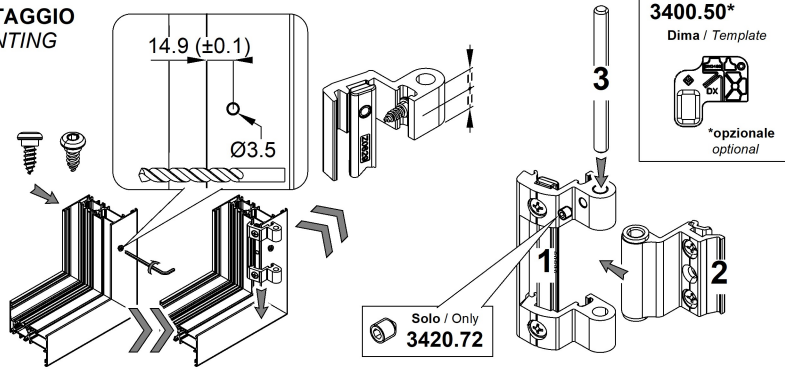


Riferimento nodo Camera Europea
Euro groove section riferiment

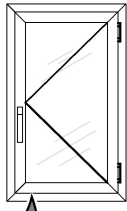


CODICE	B	C	D	E
3420.72	14	4	18	1.5
	13.5	3.2	16.8	2.4
3420.71	12	2.9	15	1.5
	10	4.2	14.5	1.5

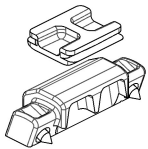
MONTAGGIO
MOUNTING



BATTENTE
CASEMENT

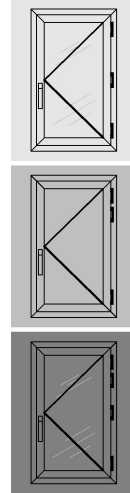


3520.33
Kit sostegno anta
Shutter support kit



	2800	2700	2600	2500	2400	2300	2200	2100	2000	1900	1800	1700	1600	1500	1400	1300	1200	1100	1000
H	100%	100%	100%	100%	100%	100%	100%	100%	100%	100%	100%	100%	100%	100%	100%	96%	90%	85%	80%
L	600	700	800	900	1000	1100	1200	1300	1400	1500	1600	1700	1800	1900	2000	2100	2200	2300	2400

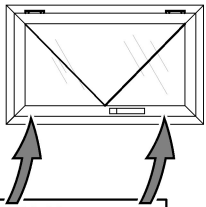
100% = 80kg
SENZA VITE without screw



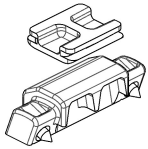
	2800	2700	2600	2500	2400	2300	2200	2100	2000	1900	1800	1700	1600	1500	1400	1300	1200	1100	1000
H	100%	100%	100%	100%	100%	100%	100%	100%	100%	100%	100%	100%	100%	100%	100%	96%	90%	85%	80%
L	600	700	800	900	1000	1100	1200	1300	1400	1500	1600	1700	1800	1900	2000	2100	2200	2300	2400

100% = 120kg
CON VITE with screw

SPORGERE
PROJECTING OPENING

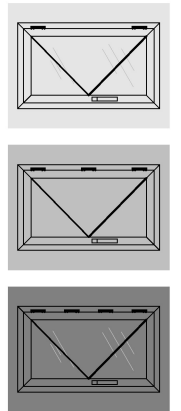


3520.33
Kit sostegno anta
Shutter support kit

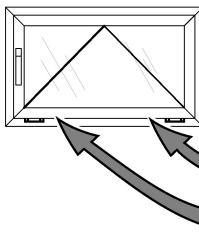


	2000	1900	1800	1700	1600	1500	1400	1300	1200	1100	1000	900	800	700	600	500	400	300
H	100%	100%	100%	100%	100%	100%	100%	100%	100%	100%	100%	100%	100%	100%	100%	100%	100%	100%
L	300	400	500	600	700	800	900	1000	1100	1200	1300	1400	1500	1600	1700	1800	1900	2000

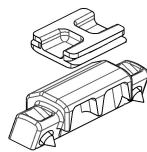
100% = 120kg
CON VITE with screw



VASISTAS PESANTE
HEAVY BOTTOM HINGE WINDOW

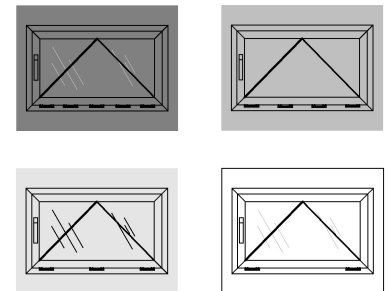


3520.33
Kit sostegno anta
Shutter support kit



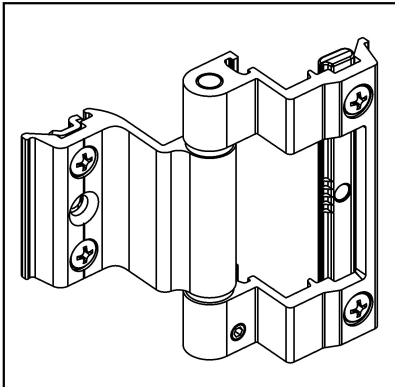
CON VITE with screw 100%=250kg

H	3000	72%	80%	80%	80%	100%
L	2000	72%	80%	80%	80%	100%
	1600	60%	80%	80%	80%	100%
	1100	60%	80%	80%	80%	100%
	500	48%	48%	60%	60%	74%
	500	1100	1600	2000	2500	

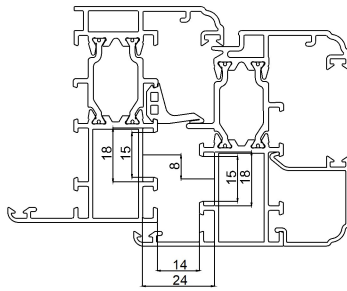


STRINGA DI PRODOTTO | CLASSIFICATION - EN 1935:2004

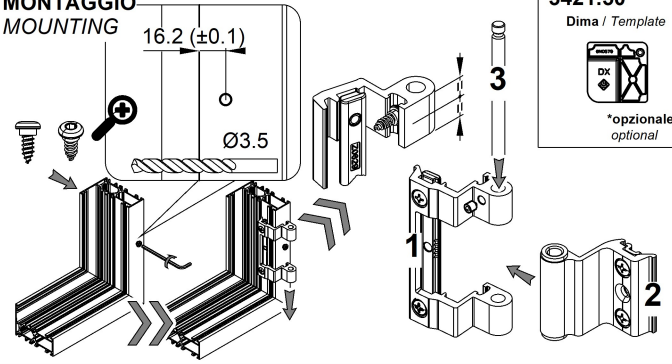
ART.	Categoria d'uso Category of Us	Durabilità Durability	Massa Mass	Resistenza Fuoco Fire Resistance	Sicurezza di utilizzo Safety in Use	Resistenza corrosione Corrosion Resistance	Resistenza effrazione Security	GRADO GRADE
3420.71/72	1	4	3	0	1	4	0	9



Riferimento nodo sistema cava R
R groove system section riferiment



MONTAGGIO
MOUNTING



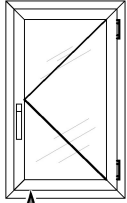
3421.50*

Dima / Template

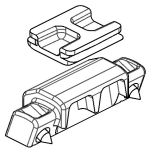


*opzionale
optional

BATTENTE
CASEMENT



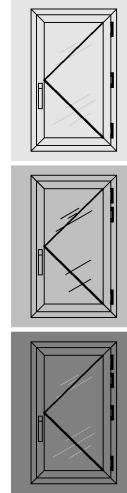
3521.33
Kit sostegno anta
Shutter support kit



	2800	2700	2600	2500	2400	2300	2200	2100	2000	1900	1800	1700	1600	1500	1400	1300	1200	1100	1000	
H	100%	100%	100%	100%	100%	100%	100%	100%	100%	100%	100%	100%	100%	100%	100%	100%	100%	100%	100%	100%
L	600	700	800	900	1000	1100	1200	1300	1400											



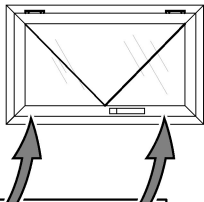
100% = 80kg
SENZA VITE
without screw



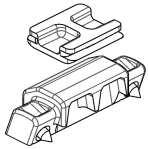
	2800	2700	2600	2500	2400	2300	2200	2100	2000	1900	1800	1700	1600	1500	1400	1300	1200	1100	1000	
H	100%	100%	100%	100%	100%	100%	100%	100%	100%	100%	100%	100%	100%	100%	100%	100%	100%	100%	100%	100%
L	600	700	800	900	1000	1100	1200	1300	1400											



100% = 120kg
CON VITE
with screw



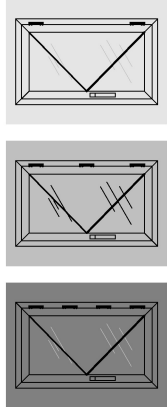
3521.33
Kit sostegno anta
Shutter support kit



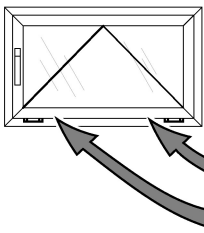
	2000	1900	1800	1700	1600	1500	1400	1300	1200	1100	1000	900	800	700	600	500	400	300	
H	100%	100%	100%	100%	100%	100%	100%	100%	100%	100%	100%	100%	100%	100%	100%	100%	100%	100%	100%
L	300	400	500	600	700	800	900	1000	1100	1200	1300	1400	1500	1600	1700	1800	1900	2000	



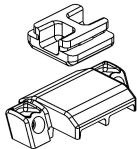
100% = 110kg
CON VITE
with screw



VASISTAS PESANTE
HEAVY BOTTOM HINGE WINDOW

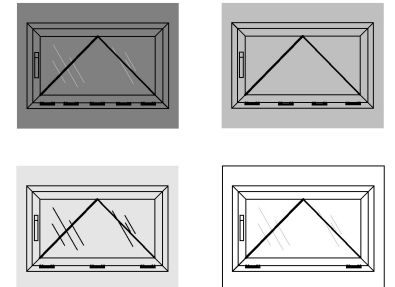


3521.33
Kit sostegno anta
Shutter support kit



CON VITE
with screw 100%=140kg

	3000	2000	1600	1100	500
H	72%	72%	60%	60%	48%
L	500	1100	1600	2000	2500



STRINGA DI PRODOTTO | CLASSIFICATION - EN 1935:2004

ART.	Categoria d'uso Category of Us	Durabilità Durability	Massa Mass	Resistenza Fuoco Fire Resistance	Sicurezza di utilizzo Safety in Use	Resistenza corrosione Corrosion Resistance	Resistenza effrazione Security	GRADO GRADE
3421.71	1	4	3	0	1	4	0	9