

# **SMART SOLUTIONS FOR GLOBAL WINDOW SYSTEMS.**



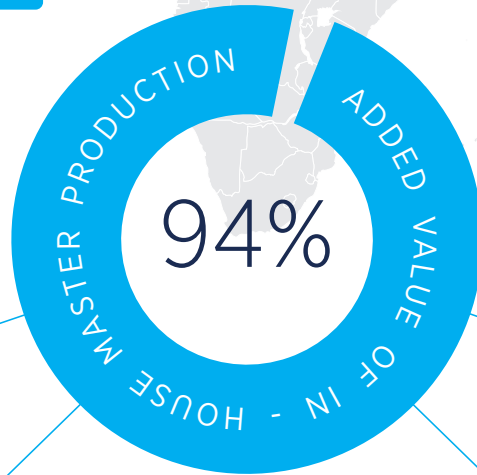
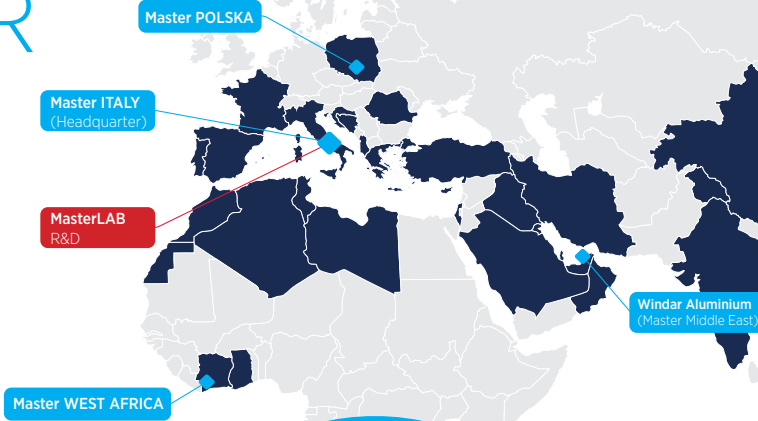
MESSE  
MÜNCHEN

2025

# **BAU**

Visit Us Here!  
Hall C4 - Stand 540

# MASTER GROUP



15  
NUMBER OF PRODUCTION DEPARTMENTS

25K  
NUMBER OF ARTICLES FINISHED PRODUCTS

2,305 MWh  
SELF-PRODUCED ENERGY (ESTIMATED VALUE)

95%  
ON TIME DELIVERY

Since 1986, the Master Group has designed and manufactured high-tech accessories and components for aluminum enclosures, managing 94% of production internally.

The Master brand represents excellence in the sector, aimed at the development of new international markets, with an export turnover that represents approximately 52% of the total and a number of finished products in the catalog of more than 25,000 references. The Group's constant expansion is supported by several key factors, among which is the continuous innovation of processes and the adoption

of advanced technologies, which has allowed the creation of 3 organizational subsidiaries around the world.

Investments in Research and Development, carried out by the MasterLAB research center, play a crucial role. The company has built an organizational culture

that adheres to the key principles of Lean Manufacturing to achieve optimal service levels, guaranteeing, today, 95% on-time delivery. In fact, the identification of new market needs and the continuous commitment to customer care and satisfaction are at the center of the company's philosophy.

350  
EMPLOYEES

3  
BRANCHES SUBSIDIARIES

+50%  
EXPORT



+1K  
TESTS CARRIED OUT ANNUALLY

4K  
ANNUAL COMPATIBILITY TESTS FOR ACCESSORIES

41  
UNIQUE PATENTS WORLDWIDE

30  
INNOVATIVE PROJECTS MANAGED ANNUALLY

+500  
ANNUAL COMPATIBILITY TESTS FOR ACCESSORIES



THE NEW ESSENTIAL

NIX is the new line of concealed handles for tilt and turn systems and casement design by Master Italy. NIX is a new concept that takes minimalism to the extreme up to the idea of "nothing" as the maximum form of elegance. NIX is therefore characterized by an absolutely essential design in which the handle merges and integrates completely into the window profile.



CLOSING POSITION



CASEMENT OPENING



TILT OPENING



MINIMAL DESIGN



UNIVERSAL APPLICATION



COMFORTABLE DURING OPENING PHASES



SIMPLE AND COMFORTABLE MACHINING

DISCOVER MORE





## THE INTELLIGENT SYSTEM FOR THE WINDOWS OF THE FUTURE

APRO is designed above all to respond to the need to make the openings of modern residential, commercial and industrial buildings automatic and intelligent, enhancing the design of these new architectures, thanks to a range of accessories capable of transforming any window or door into an integrated home automation element. The range consists of overlaid or built-in actuators of extremely small size that combine movement efficiency and design, complemented by locking systems and control devices via gateways interfaced with a dedicated app.



DESIGN



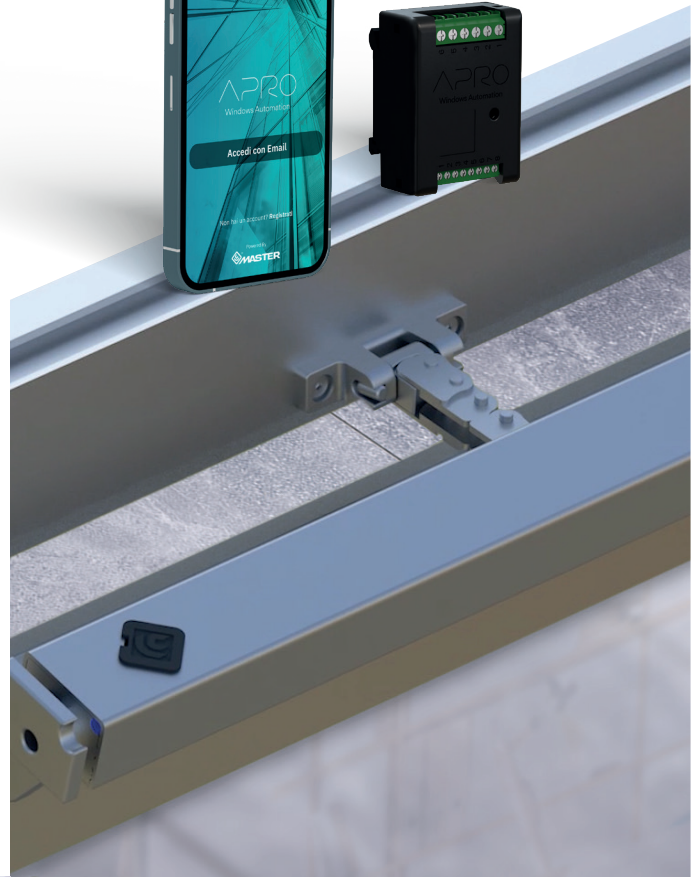
RANGE



SECURITY



PERFORMANCE



## INVISIBLE SOLUTION FOR ALL TYPES OPENING

The new WEEN HIDE 180 is Master Italy's solution for tilt & turn, casement and bottom hung systems that meets all requirements in terms of load-bearing capacity, design, functionality and durability.

WEEN HIDE 180 is the most advanced and high-performance version of the WEEN PROGRAM, with a minimalist design featuring concealed hinges with 180° opening that can be used for all types of opening systems.



LOAD CAPACITY  
150kg



3D AJUSTEMENTS



DURABILITY



QUICK ASSEMBLY



# KARMA®

## THE NEW COMPLETE LINE OF DESIGN CREMONE, HANDLES, OFFSET HANDLES, DOOR HANDLES, AND PULL HANDLES

KARMA is the new complete line of design cremone bolts, handles, offset handles, twin handles, and grab bars, specifically created to satisfy all requirements of the continuously evolving market of door and window hardware. The true strength of KARMA lies in the fact that it offers a comprehensive range of technical solutions that beautifully integrate the original design features.



DESIGN



RANGE



SECURITY



EASY TO INSTALL

# EASY BLOCK

## THE RANGE OF RESTRICTOR ARMS FOR ANY TYPE OF OPENING

EASY BLOCK is the complete range of restrictor arms that can be applied to any type of opening and is suitable for modern architecture, which is characterised by large window frames with significant weights and dimensions.

EASY BLOCK line responds to this need by offering a complete line of restrictors that stand out due to high quality materials; easy and quick assembly; and, last but not least, durability and load-bearing performance at the highest level in their category.



RANGE



QUICK ASSEMBLY

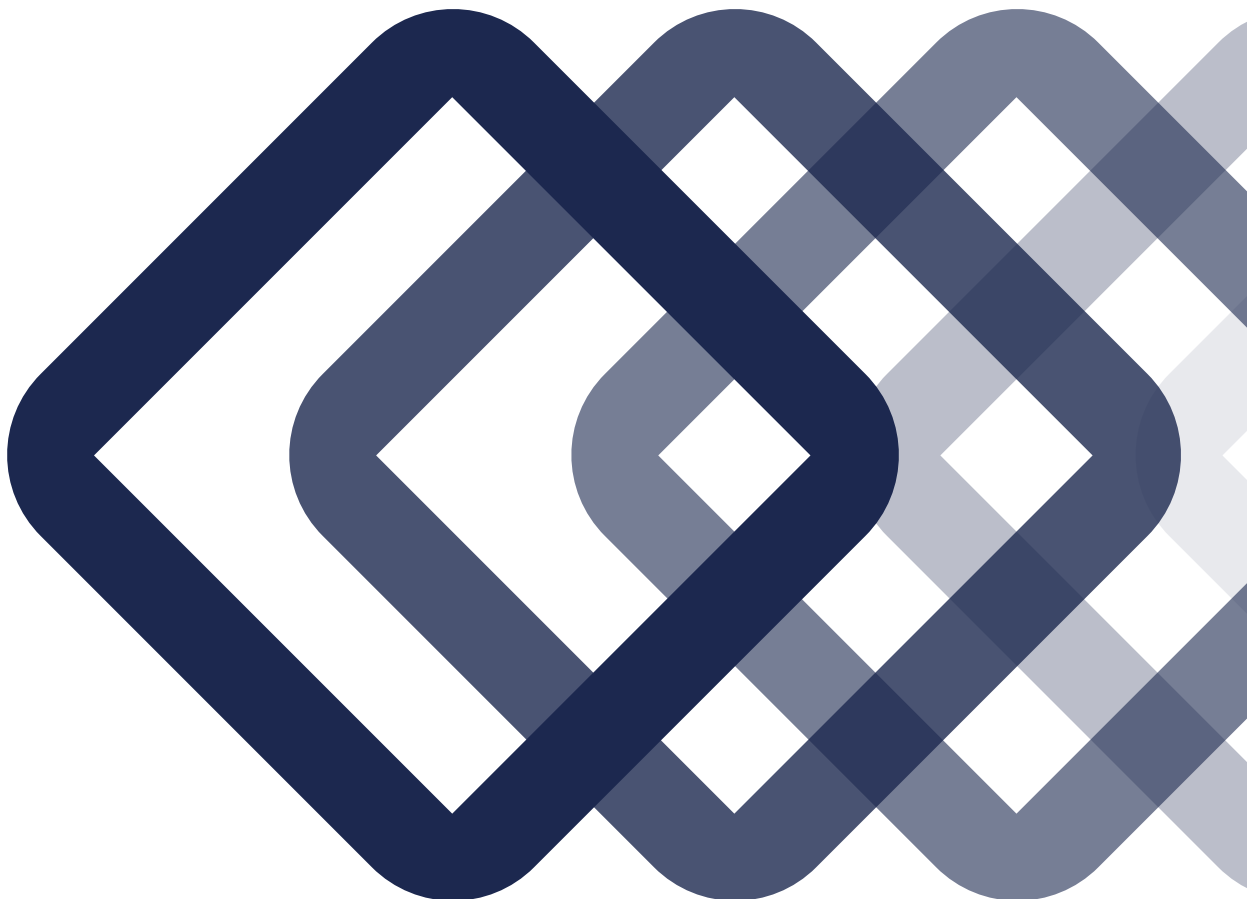


DURABILITY



QUALITY





**MASTER s.r.l.**  
con Socio Unico

S.P.37 Conversano  
Castiglione km. 0,7 [z.i.]  
70014 Conversano (Bari)  
Italy - C.P. 112

Tel.: +39 080 4959823

P. IVA 03620970727

**MASTER ITALY s.r.l.**  
con Socio Unico

Società soggetta a direzione  
e coordinamento di Master s.r.l.

S.P.37 Conversano  
Castiglione km. 0,570 [z.i.]  
70014 Conversano (Bari)  
Italy - C.P. 112

Tel.: +39 080 4959823  
Fax.: +39 080 4959030

P. IVA 07780290727

**MasterLAB s.r.l.**  
unipersonale

Società soggetta a direzione  
e coordinamento di Master s.r.l.

S.P.37 Conversano  
Castiglione km. 0,7 [z.i.]  
70014 Conversano (Bari)  
Italy - C.P. 112

Tel.: +39 080 4955957  
CS: +39 366 2488323

P. IVA 06835770725

**Master West Africa Sarl**

Abidjan, Marcory,  
Zone 4 - 19 Rue Marconi

Tel.: +225 27 21 519526

P. IVA: 013078500046

**Master Polska Sp. z o.o.**

Partyzantów 11,  
32-500 Chrzanów  
NIP: 6762481805

**Windar Aluminium LLC**

4A St., Al Manara Road  
Al Quoz Ind. Area 1  
Dubai, UAE  
TRN/VAT: 100050291200003